

CAREC INSTITUTE WORK PLAN 2013-2017

Subregional Country Consultation Meeting

23-24 August 2012, Beijing, People's Republic of China

28-29 August 2012, Almaty, Kazakhstan



Presentation Outline

- Work Plan preparation process
- Consideration of country inputs
- Principles for inclusion
- CI Work Plan 2013-2014
- Indicative Areas 2015-2017
- Resource Implications

WP Preparation Process

- Review of sector work plans
- Solicitation of country inputs
- Identification of activities in the three pillars
 - Knowledge generation (KG)
 - Knowledge services (KS)
 - Knowledge management (KM)

Consideration of country inputs

- Those linked to sector work plans and identified KS activities will be integrated into the design of the capacity building activities
- Some common needs were included in the WP

Principles Applied for Identifying Activities for inclusion in the WP

- **Integration**: the extent to which an activity spans the three pillars
- **Results-based**: the extent to which an activity would contribute to the delivery of targets in CAREC 2020
- **Partnership and networking**: the extent to which an activity would promote partnerships and collaboration with MIs and CAREC institutions

Prioritization and Resource Implications

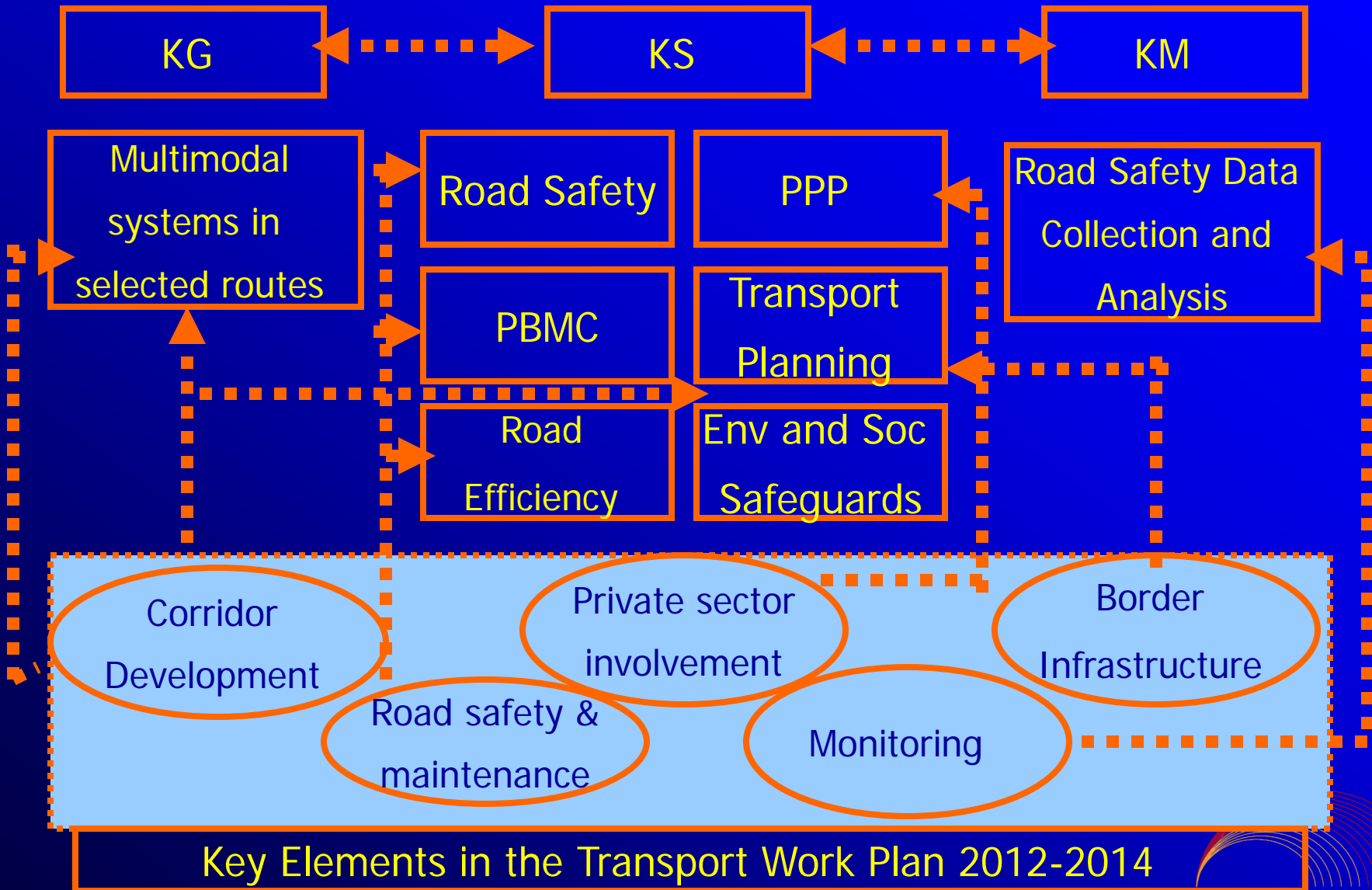
- Prioritization would depend on resource availability
 - around 12 training courses (3 from each of the four sectors) could be implemented in 2013, and another 12 in 2014;
 - at least two studies under the knowledge generation pillar could be conducted in the course of 2013-2014 ; and
 - at least two knowledge management activities could be implemented in 2013-2014.

Prioritization... (continued)

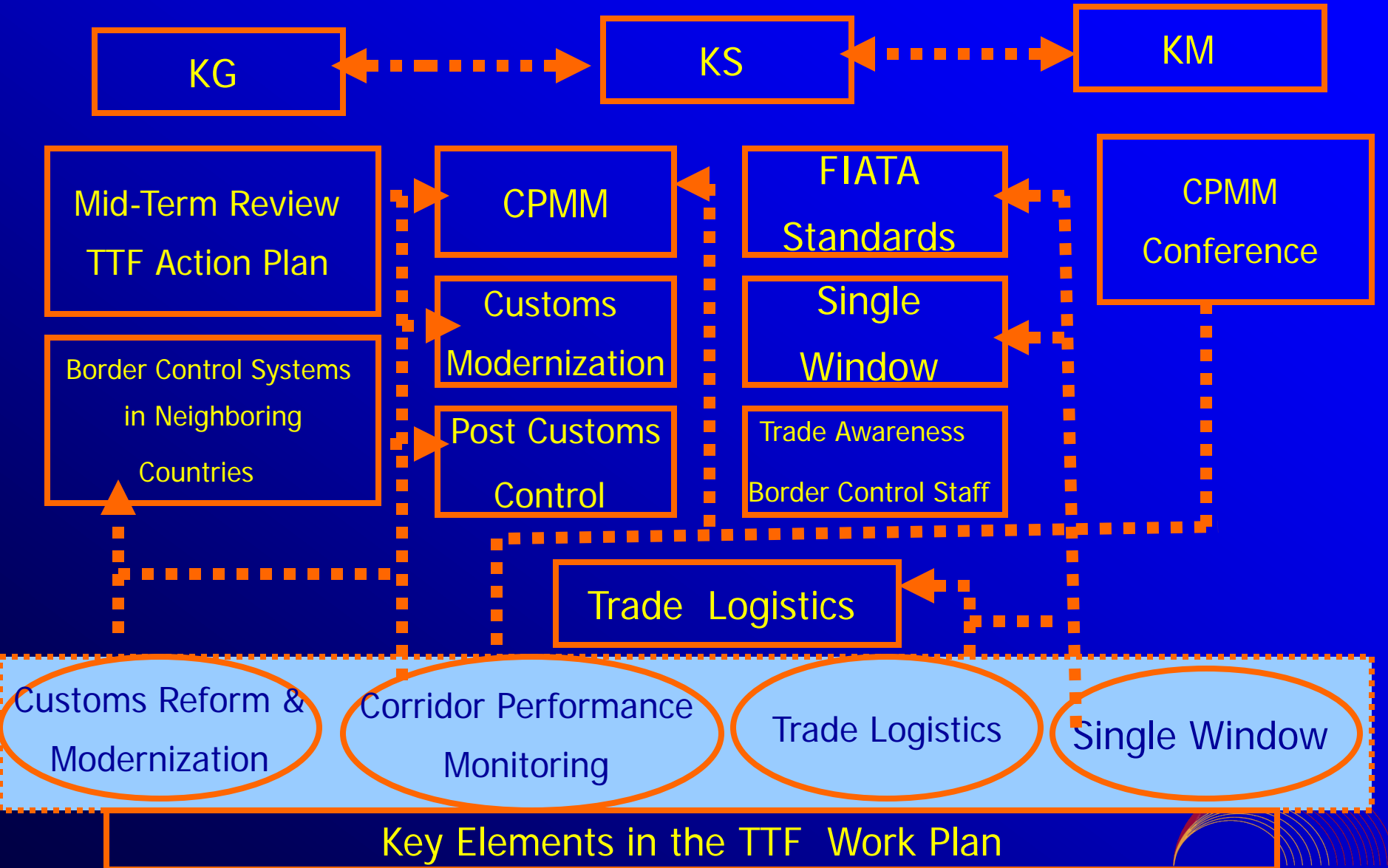
- Specifically for training courses, the activities have been over programmed by about 30%, using as benchmark, the resources that could be made available primarily by ADB.
- Full program delivery would therefore depend on the additional support that could be provided by the MIs, as well as cost-sharing arrangements with the CAREC countries and/or institutions.

CI Work Plan 2013-2014

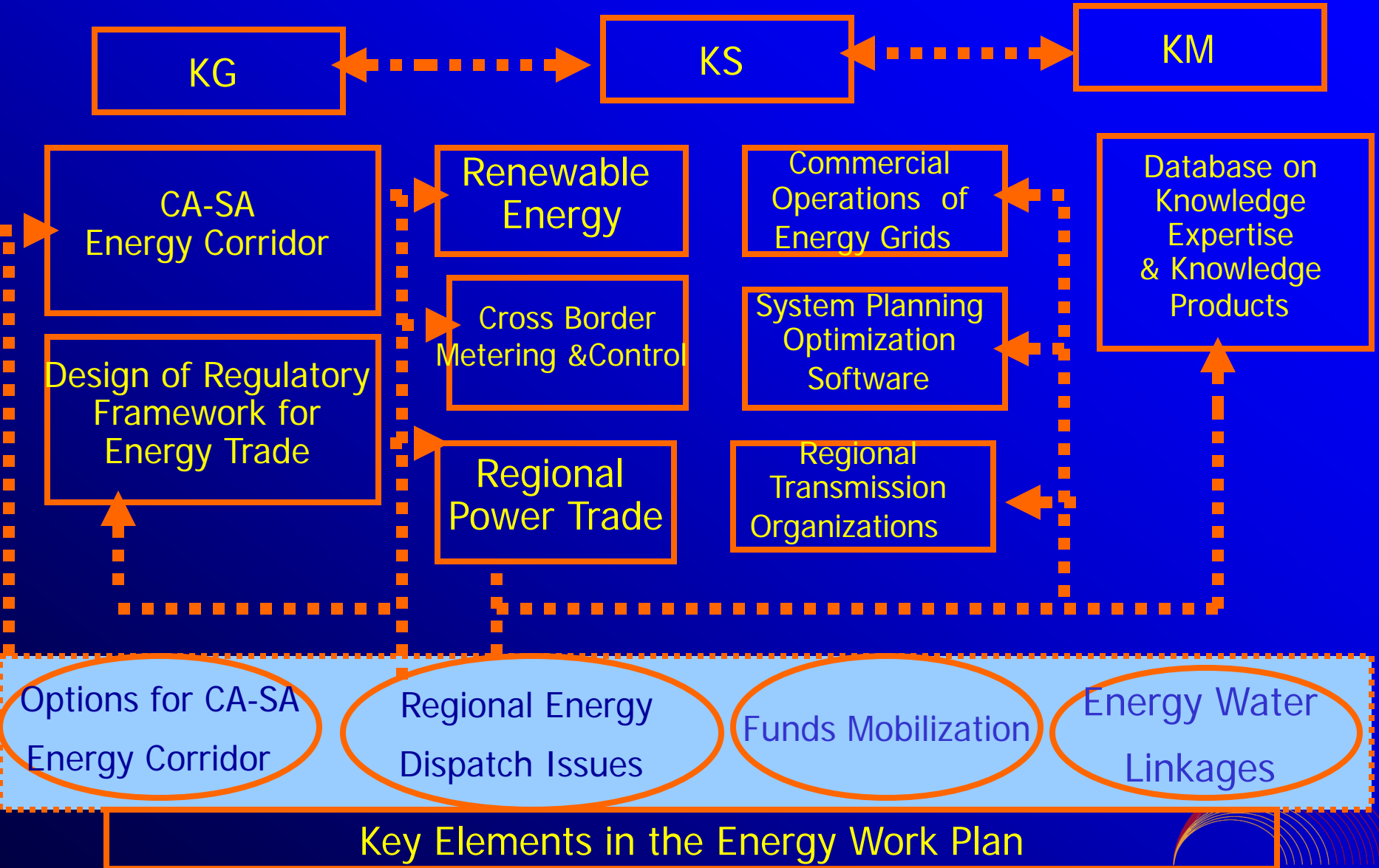
TRANSPORT 2013-2014



TRANSPORT & TRADE FACILITATION 2013-2014

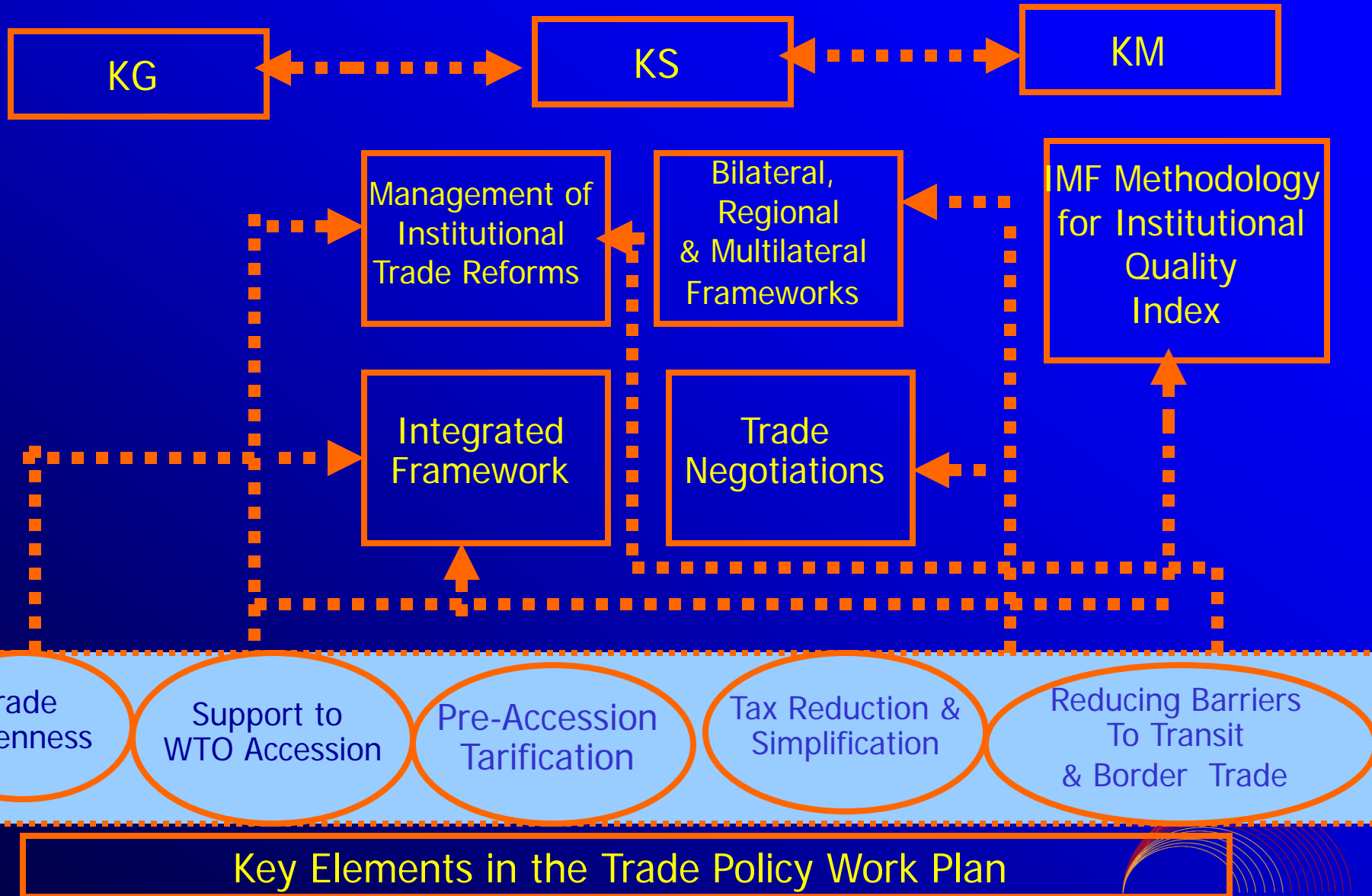


ENERGY 2013-2014

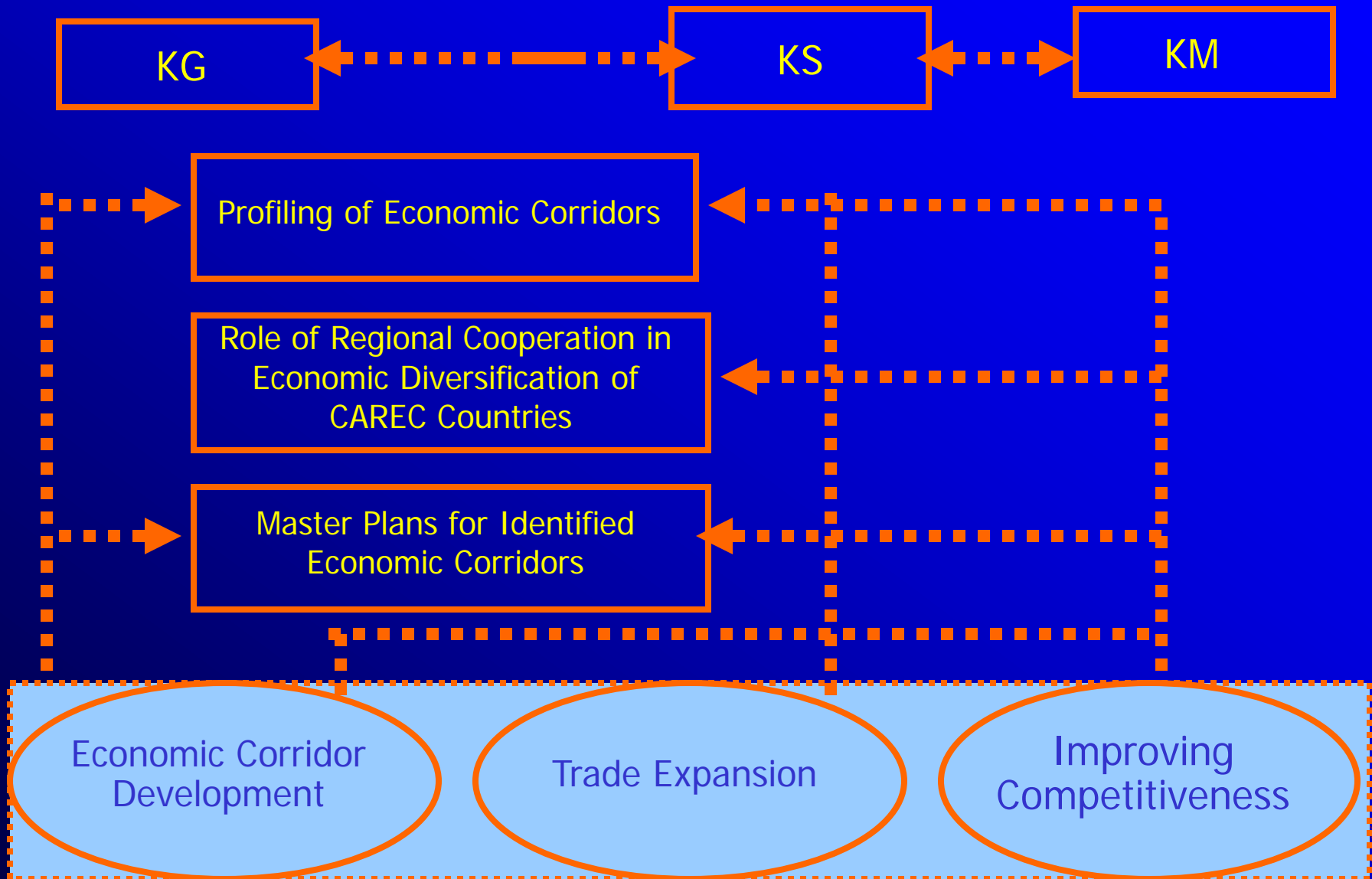


Key Elements in the Energy Work Plan

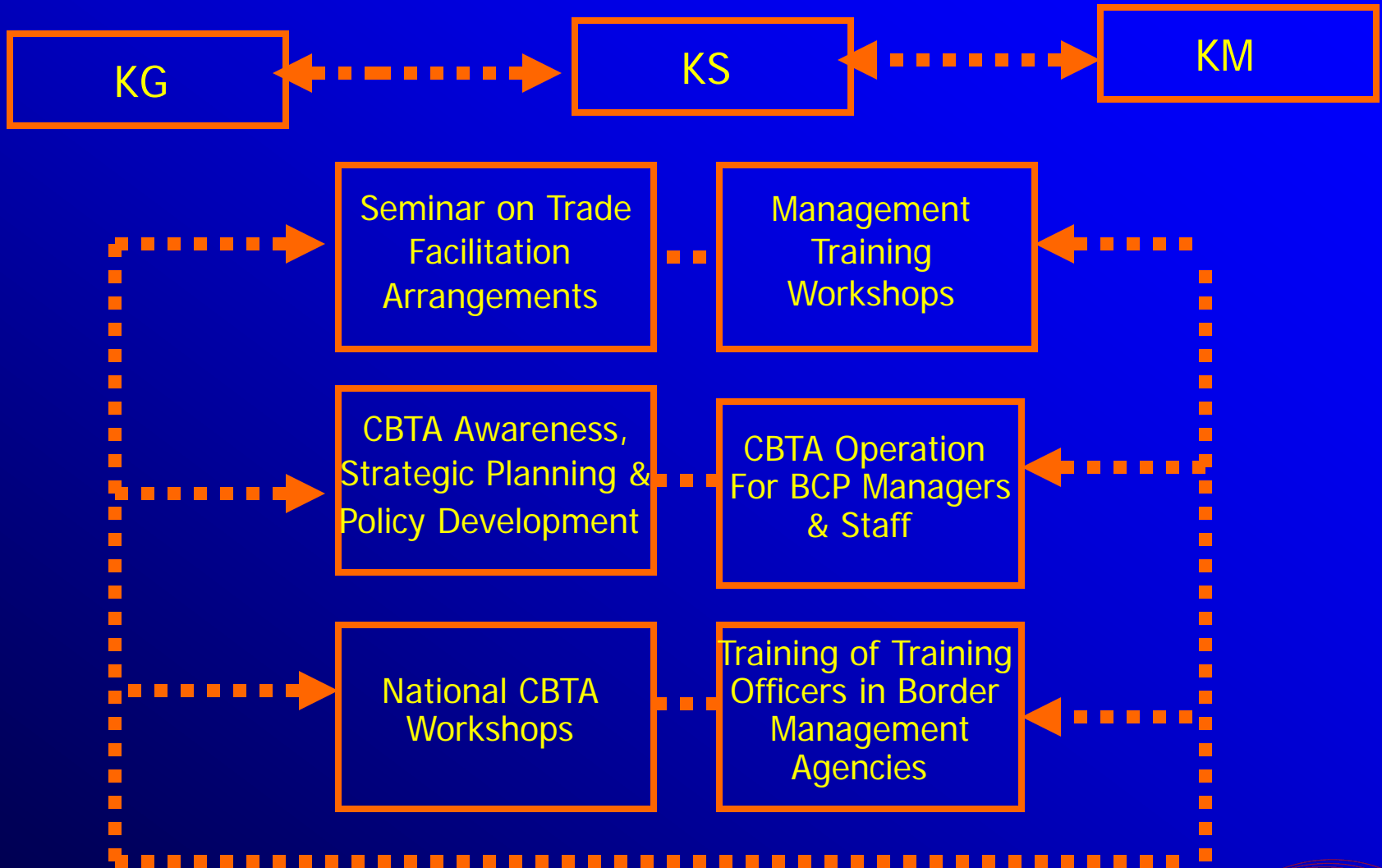
TRADE POLICY 2013-2014



REGIONAL/MULTISECTORAL 2013-2014

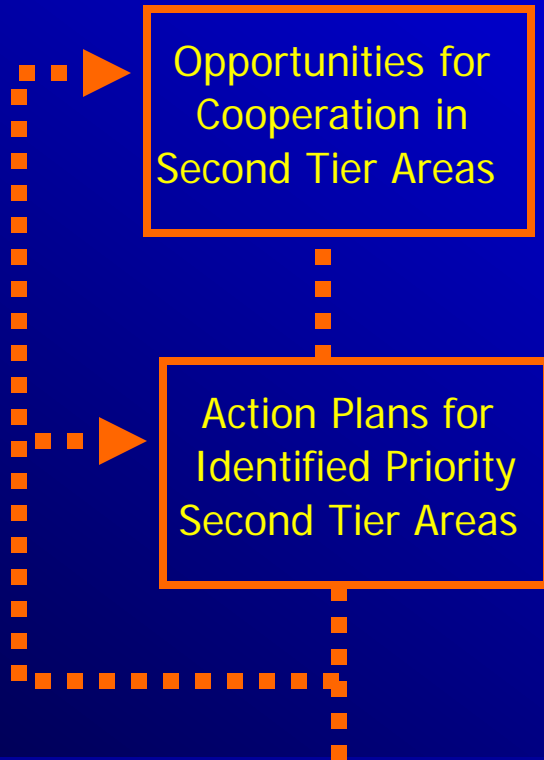
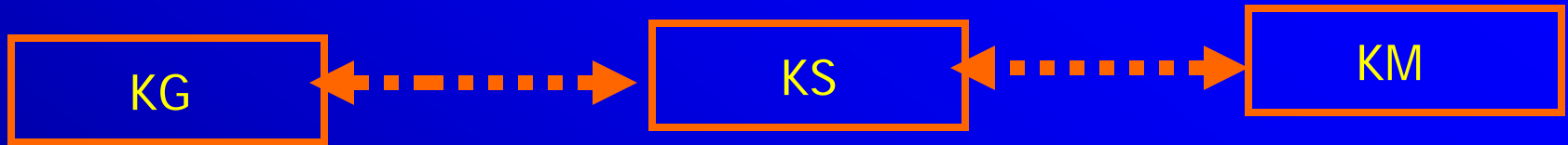


CROSS-BORDER TRANSPORT AGREEMENT 2013-2014



Transport and Trade Facilitation

SECOND TIER AREAS 2013-2014



Social impacts of trade expansion and competitiveness

CI Work Plan 2015-2017

Indicative Areas 2015-2017

- It is envisaged that the activities for 2015 and beyond would evolve as CAREC cooperation in the various sectors make progress, and as other issues are identified in the course of conducting knowledge generation and knowledge services activities.
- Indicative areas were identified based on sector strategies but these will have to be revisited and reviewed in due course.

Indicative Areas 2015-2017

- Knowledge Generation
- **Transport**: multimodal transport systems, railway sector restructuring, liberalization of air services
- **TTF**: Modernization of BCP, special economic zones, supply chains
- **Trade Policy**: review of TPSAP, assessment of trade reforms, trade in services
- **Energy**: energy-water issues, design of regulatory frameworks, national and regional grid codes, energy corridors and intra and inter-regional linkages, improved forecasting

Indicative Areas 2015-2017

- Knowledge Services

- **Transport:** road efficiency by modes; international conventions in road, rail, aviation; liberalization of transport services; climate proofing of road infrastructure
- **TTF:** Behind the border measures, comparative regional transit systems, models of joint customs control
- **Trade Policy:** review of TPSAP, assessment of trade reforms, trade in services, cross-border movement of people, simplification of road fees and other charges
- **Energy:** demand side management, commercialization of energy trade, PPPs in energy, governance and tariff adjustments, management of multi-purpose water reservoirs, hydropower development in int'l rivers.

Indicative Areas 2015-2017

- Knowledge Management
- **Transport**: database on road and rail sections of economic corridors
- **TTF**: Forum on trade logistics development
- **Trade Policy**: Regional economic integration
- **Energy**: Compilation of national and regional energy efficiency statistics, policies and measures

Points for Discussion

- Confirmation of activities to be included in the Work Plan, focusing on 2013-2014;
- Additional proposals, if any; and
- For training activities, a discussion of broad design elements such as: (i) participating countries; (ii) topics to be covered; and (iii) implementing and collaborating institutions.

THANK YOU
